



**If the subject
is Part Washing Machine,
our address
Certain!**

REKPARSAN
PRODUCT CATALOGUE
www.rekparsan.com

WORK CONDITIONS

The machine should be able to operate smoothly between 0 ° C and + 60 ° C ambient temperature. It shall also operate without any problems under intense damp and dusty working conditions.

STANDARDS

The machine is manufactured from a double boiler system and has a reinforced body structure. It is only produced by REKPARSAN INNOVATION MACHINE AUTO. SINGING. and TIC. LTD. STI. in Turkey.

- Mechanical components shall meet DIN 5510 / Part 2 (Fire and smoke).
- The utilization period of the machine shall be at least 30 years.
- The materials used in the machine shall be new, suitable for the intended use and in accordance with internationally accepted standards.
- UIC, IEC, DIN, NF, BS or corresponding standards are used.
- The protection class of the machine shall be at least IP 54.

ELECTRICAL - ELECTRONIC EQUIPMENT

- The power supply equipment shall be located inside a control panel mounted on the edge of the machine with at least IP54 protection class. Electricity 380 V-50 Hz. 3 phases
- There shall be a Turkish label on the electrical control buttons.
- Cables are halogen free and shall be fire retardant and located in a special protector.
- The entire electrical system of the machine shall be produced by SIEMENS or SCHNEIDER.
- All cables, relays, terminal blocks, connectors and electrical equipment on the device will be indelibly labeled in accordance with the circuit diagram.
The Main Control Panel Shall Include The Following;
- Three pole magno thermal circuit breaker.
- Electrical thermal system for engines.
- Tools controlling emergency switches series.
- Tools for monitoring electrical parameters.
- Power-on light.
- Fault Light
- Emergency Warning Light
- Switchs related to auxiliary devices.
- Push switch for emergency situations.

HB 65 EURO PARTS WASHER



TECHNICAL SPECIFICATIONS

Machine Outer Dimensions Width / Length / Height	700 x 700 x 800 mm
Washing Cabinet Internal Dimensions Width / Length / Height	650 x 650 x 400 mm
Washing Basket Dimensions Ø	550 mm
Loading Height	350 mm
Basket capacity	300 KG
Pump pressure	3,2 bar x 40 ton/h 1 pieces
Pump Power	2.5 hp
Pump / Reducer	Rekparsan / Yılmaz Redüktör
Total Number of Nozzles	40 pcs
Heater Power	5 kw
Electricity (V / phase)	380 V / 3
Heat Insulation System	OPS
Cover Safety System	Standard
Basket Stop System	Automatic
Contact System	Standard
Thermal and Engine Protections	Standard
Digital-timer	0-90 dk
Digital thermostat	0-120 oC
Cover opening system	Damper
Body structure	AISI Chrome Double Boiler
Tank volume	600 lt
Machine Total Weight	250 kg

HB 90 EURO PARTS WASHER



TECHNICAL SPECIFICATIONS

Machine Outer Dimensions Width / Length / Height	900 x 920 x 1100 mm
Washing Cabinet Internal Dimensions Width / Length / Height	820 x 820 x 650 mm
Washing Basket Dimensions Ø	750 mm
Loading Height	450 mm
Basket Capacity	500 kg
Pump Pressure	6,6 bar x 40 ton/hour - 1 piece
Pump Power	2 hp
Pump / Reductor	Rekparsan / Yılmaz Redüktör
Total Number of Nozzles	70 pcs
Heater Power	7,5 kw
Electricity (V/phase)	380 V / 3
Heat Insulation System	Standard
Cover Safety System	Standard
Basket Stop System	Automatic
Contact System	Standard
Thermal and Engine Protections	Standard
Digital Timer	0-90 min
Digital Thermostat	0-120 oC
Cover Opening System	Damper
Body Structure	AISI Chrome Double Boiler
Tank Volume	120 lt
Machine Total Weight	150 kg

HB 110 EURO PARTS WASHER



TECHNICAL SPECIFICATIONS

Machine Outer Dimensions Width / Length / Height	1100 x 1400 x 1200 mm
Washing Cabinet Internal Dimensions Width / Length / Height	950 x 950 x 750 mm
Washing Basket Dimensions Ø	900 mm
Loading Height	450 mm
Basket Capacity	750 kg
Pump Pressure	6,6 bar x 40 ton/hour - 1 piece
Pump Power	2 hp
Pump / Reductor	Rekparsan / Yılmaz Redüktör
Total Number of Nozzles	80 pcs
Heater Power	7,5 kw
Electricity (V/phase)	380 V / 3
Heat Insulation System	Standard
Cover Safety System	Standard
Basket Stop System	Automatic
Contact System	Standard
Thermal and Engine Protections	Standard
Digital Timer	0-90 min
Digital Thermostat	0-120 oC
Cover Opening System	Damper
Body Structure	AISI Chrome Double Boiler
Tank Volume	130 lt
Machine Total Weight	160 kg

HB 130 EURO PARTS WASHER



TECHNICAL SPECIFICATIONS

Machine Outer Dimensions Width / Length / Height	1300 x 1750 x 1700 mm
Washing Cabinet Internal Dimensions Width / Length / Height	1230 x 1230 x 750 mm
Washing Basket Dimensions Ø	1180 mm
Loading Height	650 mm
Basket Capacity	1200 kg
Pump Pressure	6,6 bar x 40 ton/hour - 1 piece
Pump Power	2 hp
Pump / Reductor	Rekparan / Yılmaz Redüktör
Total Number of Nozzles	150 pcs
Heater Power	15 kw
Electricity (V/phase)	380 V / 3
Heat Insulation System	Standard
Cover Safety System	Standard
Basket Stop System	Automatic
Contact System	Standard
Thermal and Engine Protections	Standard
Digital Timer	0-90 min
Digital Thermostat	0-120 oC
Cover Opening System	Damper
Body Structure	AISI Chrome Double Boiler
Tank Volume	180 lt
Machine Total Weight	400 kg
Loading Car	Standard

HB 130 P EURO PARTS WASHER



TECHNICAL SPECIFICATIONS

Machine Outer Dimensions Width / Length / Height	1300 x 1750 x 1900 mm
Washing Cabinet Internal Dimensions Width / Length / Height	1230 x 1230 x 750 mm
Washing Basket Dimensions Ø	1200 mm
Loading Height	750 mm
Basket Capacity	1200 kg
Pump Pressure	6,6 bar x 40 ton/hour - 2 piece
Pump Power	2 hp
Pump / Reductor	Rekparsan / Yılmaz Redüktör
Total Number of Nozzles	150 pcs
Heater Power	15 kw
Electricity (V/phase)	380 V / 3
Heat Insulation System	Standard
Cover Safety System	Standard
Basket Stop System	Automatic
Contact System	Standard
Thermal and Engine Protections	Standard
Digital Timer	0-90 min
Digital Thermostat	0-120 oC
Body Structure	AISI Chrome Double Boiler
Tank Volume	180 lt
Machine Total Weight	550 kg
Loading Car	Standard
Cover Opening System	Pneumatics
Pneumatic Equipments	Two Way Valve Mag

HB 1600 P EURO PARTS WASHER



TECHNICAL SPECIFICATIONS

Machine Outer Dimensions Width / Length / Height	1600 x 2000 x 1900 mm
Washing Cabinet Internal Dimensions Width / Length / Height	1450 x 1450 x 1000 mm
Washing Basket Dimensions Ø	1420 mm
Loading Height	750 mm
Basket Capacity	1500 kg
Pump Pressure	6,6 bar x 40 ton/hour - 1 piece
Pump Power	2,5 hp
Pump / Reductor	Rekparan / Yılmaz Redüktör
Total Number of Nozzles	170 pcs
Heater Power	15 kw
Electricity (V/phase)	380 V / 3
Heat Insulation System	Standard
Cover Safety System	Standard
Basket Stop System	Automatic
Contact System	Standard
Thermal and Engine Protections	Standard
Digital Timer	0-90 min
Digital Thermostat	0-120 oC
Body Structure	AISI Chrome Double Boiler
Tank Volume	220 lt
Machine Total Weight	800 kg
Loading Car	Standard
Cover Opening System	Pneumatics
Pneumatic Installation	Steel
Pneumatic Equipments And Regulating Valves	Two Way Valve PRC

HB 2100 P EURO PARTS WASHER



TECHNICAL SPECIFICATIONS

Machine Outer Dimensions Width / Length / Height	2100 x 2600 x 2000 mm
Washing Cabinet Internal Dimensions Width / Length / Height	1950 x 1950 x 1000 mm
Washing Basket Dimensions Ø	1700 mm
Loading Height	550 mm
Basket Capacity	3000 KG
Pump Pressure	6,6 bar x 40 ton/hour - 3 pieces
Pump Power	2 hp
Pump / Reducer	Rekparan / Yılmaz Redüktör
Total Number of Nozzles	200 pcs
Heater Power	45 kw
Electricity (V / phase)	380 V / 3
Heat Insulation System	Standard
Cover Safety System	Standard
Basket Stop System	Automatic
Contact System	Standard
Thermal and Engine Protections	Standard
Digital Timer	0-90 min
Digital Thermostat	0-120 oC
Body Structure	AISI Chrome Double Boiler
Tank Volume	300 lt
Machine Total Weight	1100 kg
Loading Car	Standard
Cover Opening System	Pneumatics
Basket Load Control System	Standard
Pneumatic Installation	Steel
Pneumatic Equipments And Regulating Valves	Two Way Valve Mag

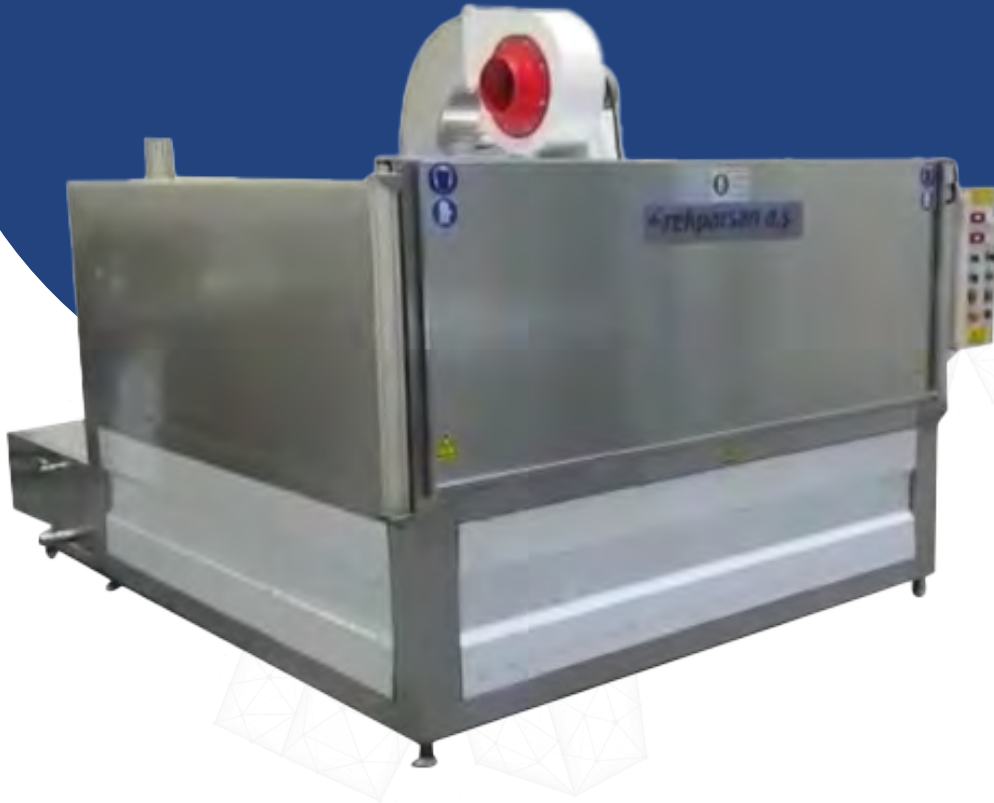
HB 2600 P EURO PARTS WASHER



TECHNICAL SPECIFICATIONS

Machine Outer Dimensions Width / Length / Height	2600 x 3100 x 2200 mm
Washing Cabinet Internal Dimensions Width / Length / Height	2450 x 2450 x 1200 mm
Washing Basket Dimensions Ø	2300 mm
Loading Height	550 mm
Basket Capacity	2500 KG
Pump Pressure	6,6 bar x 40 ton/hour - 3 pieces
Pump Power	3 hp
Pump / Reducer	Rekparsan / Yılmaz Redüktör
Total Number of Nozzles	320 pcs
Heater Power	45 kw
Electricity (V / phase)	380 V / 3
Heat Insulation System	Standard
Cover Safety System	Standard
Basket Stop System	Automatic
Contact System	Standard
Thermal and Engine Protections	Standard
Digital Timer	0-90 min
Digital Thermostat	0-120 oC
Body Structure	AISI Chrome Double Boiler
Tank Volume	450 lt
Machine Total Weight	1600 kg
Loading Car	Standard
Cover Opening System	Pneumatics
Basket Load Control System	Standard
Pneumatic Installation	Steel
Pneumatic Equipments And Regulating Valves	Two Way Valve Mag

HB 2600 P EURO COMPACT PARTS WASHER



TECHNICAL SPECIFICATIONS

Machine Outer Dimensions Width / Length / Height	2600 x 3200 x 2200 mm
Washing Cabinet Internal Dimensions Width / Length / Height	2500 x 2500 x 1100 mm
Washing Basket Dimensions Ø	2400 mm
Loading Height	550 mm
Basket Capacity	2750 KG
Pump Pressure	6,6 bar x 40 ton/hour - 4 pieces
Pump Power	3 hp
Pump / Reducer	Rekparsan / Yılmaz Redüktör
Total Number of Nozzles	400 pcs
Heater Power	60 kw
Electricity (V / phase)	380 V / 3
Heat Insulation System	Standard
Cover Safety System	Standard
Basket Stop System	Automatic
Rinse and Dry	Standard
Thermal and Engine Protections	Standard
Digital Timer	0-90 min
Digital Thermostat	0-120 oC
Body Structure	AISI Chrome Double Boiler
Tank Volume	800 lt
Machine Total Weight	1800 kg
Loading Car	Standard
Cover Opening System	Pneumatics
Basket Load Control System	Standard
Pneumatic Installation	Steel
Pneumatic Equipments And Regulating Valves	Two Way Valve Mag

HB 3000 P EURO PARTS WASHER



TECHNICAL SPECIFICATIONS

Machine Outer Dimensions Width / Length / Height	3000 x 3600 x 2400 mm
Washing Cabinet Internal Dimensions Width / Length / Height	2950 x 2950 x 1300 mm
Washing Basket Dimensions Ø	2700 mm
Loading Height	550 mm
Basket capacity	2750 KG
Pump pressure	6,6 bar x 40 ton/hour - 4 pieces
Pump Power	3 hp
Pump / Reducer	Rekparisan / Yılmaz Redüktör
Total Number of Nozzles	400 pcs
Heater Power	60 kw
Electricity (V / phase)	380 V / 3
Heat Insulation System	Standard
Cover Safety System	Standard
Basket Stop System	Automatic
Contact System	Standard
Thermal and Engine Protections	Standard
Digital-timer	0-90 min
Digital thermostat	0-120 oC
Body structure	AISI Chrome Double Boiler
Tank volume	600 lt
Machine Total Weight	1600 kg
Loading Car	Standard
Cover Opening System	Pneumatics
Basket Load Control System	Standard
Pneumatic Installation	Steel
Pneumatic Equipments And Regulating Valves	Two Way Valve Mag

HB 3500 P EURO PARTS WASHER



TECHNICAL SPECIFICATIONS

Machine Outer Dimensions Width / Length / Height	3600 x 4100 x 2400 mm
Washing Cabinet Internal Dimensions Width / Length / Height	3550 x 3550 x 1400 mm
Washing Basket Dimensions Ø	3300 mm
Loading Height	550 mm
Basket capacity	3000 KG
Pump pressure	6,6 bar x 40 ton/h 4 pieces
Pump Power	3 hp
Pump / Reducer	Rekparсан / Yılmaz Redüktör
Total Number of Nozzles	450 pcs
Heater Power	60 kw
Electricity (V / phase)	380 V / 3
Heat Insulation System	Standard
Cover Safety System	Standard
Basket Stop System	Automatic
Contact System	Standard
Thermal and Engine Protections	Standard
Digital-timer	0 - 90 min
Digital thermostat	0 - 120 oC
Body structure	AISI Chrome Double Boiler
Tank volume	700 liter
Machine Total Weight	1900 kg
Loading Car	Standard
Cover Opening System	Pneumatics
Basket Load Control System	Standard
Pneumatic Installation	Steel
Pneumatic Equipments And Regulating Valves	Two Way Valve Mag

HB 100 P EURO TURBO PARTS WASHER



TECHNICAL SPECIFICATIONS

	MODEL XL	MODEL XLL
Machine External Dimensions Width / Length / Height	1195 x 800 x 1900 mm	1240 x 760 x 1900 mm
Wash Cabinet Inner Dimensions Width / Length / Height	890 x 610 x 810 mm	1000 x 610 x 810 mm
Loading Height	800 mm	800 mm
Pump pressure	70 bar x 13 tons/hour 1 piece 70 bar x 13 tons/hour 1 piece	70 bar x 13 tons/hour 1 piece 70 bar x 13 tons/hour 1 piece
Pump power	3 hp	3 hp
Pump	Rekparsan	Rekparsan
Heater power	5 kw	5 kw
Electric (V/phase)	380 V / 3	380 V / 3
Cover Safety System	Standart	Standart
Thermal And Motor Protections	Standart	Standart
Digital thermostat	0-120 °C	0-120 °C
Body structure	AISI Chrome Double Boiler	AISI Chrome Double Boiler
Warehouse volume	100 liters	100 liters
Machine Total Weight	240 kg	280 kg
Lid Opening System	Pneumatic	Pneumatic
Pneumatic Installation	Steel	Steel
Pneumatic Materials And Regulating Valves	Bidirectional Valve Mag	Bidirectional Valve Mag
Air Gun And Lighting	Standart	Standart

DIESEL PARTICULATE WASHER



TECHNICAL SPECIFICATIONS

	STANDARD MODEL	ULTRA MODEL
Machine External Dimensions Width / Length / Height	2600 x 1130 x 2150 mm	2600 x 1130 x 2150 mm
Wash Cabinet Inner Dimensions Width / Length / Height	1700 x 900 x 800 mm	1700 x 900 x 800 mm
Loading Height	1100 mm	1100 mm
Pump Pressure	10 bar x 40 tons/hour 1 piece 10 bar x 40 tons/hour 1 piece	10 bar x 40 tons/hour 1 piece 10 bar x 40 tons/hour 1 piece
Pump power	3 hp	3 hp
Pump	Rekparsan	Rekparsan
Heater power	30 kw	30 kw
Electric (V/phase)	380 V / 3	380 V / 3
Heat Insulation System	Standart	Standart
Cover Safety System	Standart	Standart
Manual Washing Pump Separately	Standart	Standart
Hot Drying System	Standart / Blower	LEISTER
Plc Touch Screen	Standart	Standart
Steam Evacuation Fan	Standart	Standart
Body structure	AISI 304 CHROME	AISI 304 CHROME
Warehouse volume	200 lt	200 lt
Machine Total Weight	950 kg	950 kg
Lid Opening System	Pneumatic	Pneumatic
Pneumatic Installation	Steel	Steel
Pneumatic Materials And Regulating Valves	Bidirectional Valve Mag	Bidirectional Valve Mag
Chrome Cartridge Filters / Washable Filters	Standart	Standart
Test Before and After Washing	Standart	Standart
Hot Water High Pressure Washing	Standart	Standart
Printer Feature	Standart	Standart

VALVE GRINDING MACHINE



TECHNICAL SPECIFICATIONS

·Healthy grinding capacity between V blocks ·Control panel placed on the cabinet ·Diyara and valve end grinding apparatuses	
Maximum diameter of the valve head that can be transported	90 mm
Maximum diameter of shank that can be connected	16 mm
Minimum diameter of shank that can be connected	330 mm
Maximum length of valves that can be connected	330 mm
Grinding Wheel size	175x35
Wheel engine speed	2800 rpm
Wheel engine power	0.36 kw
Wheelhead longitudinal movement	70 mm
Height	1410 mm
Length	570 mm
Width	480 mm
Approximate weight	90 kg

MANUAL PARTS WASHERS

USAGE AREAS

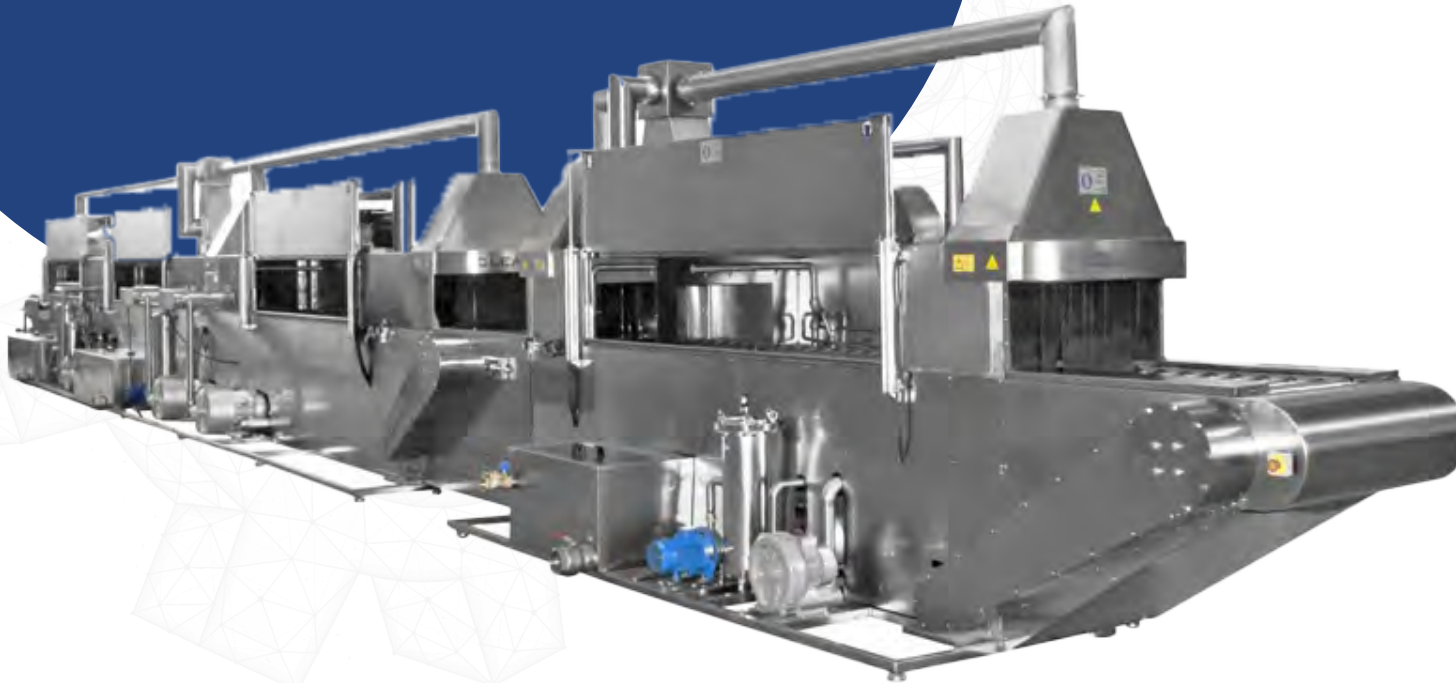
- Manual parts washers are manufactured as closed cabin gloves or open system.
- With the pedal command system, the cleaning fluid flows from the tip of the brush and the parts are cleaned manually as desired.
- Heating system and fine filtration are offered as optional.



CONVEYOR BELT TUNNEL WASHER

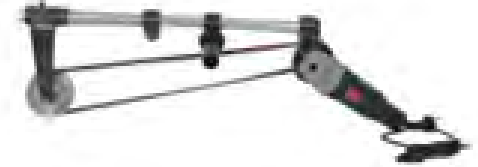
USAGE AREAS

- Conveyor belt tunnel washers are used in all kinds of manufacturing industries and are manufactured in the desired size.
- They consist of washing, rinsing, passivation, drying and lubrication units.



POLISHING MACHINE

The Polishing Machine performs the polishing and sanding process by rotating the sanding strip between two pulleys using an electric motor. The surface roughness and abrasion effect can be adjusted according to the sand thickness of the abrasive used.



CORNER GRINDER

It is an apparatus that is used to sharpen the housing grinders used during the grinding of the cylinders' heads to the desired degree.



ARBORS

They are the apparatus used during grinding of cylinder head housings by attaching to the end of the housing grinders. Squix (11.16) model comes with bearings whereas Black Decker (9.16-7.16) models have shrink-fit inner rings. The grinder middle shafts engages into the inner parts of these apparatuses during the grinding of the grinder corner.



PILOT SHAFT and HOUSING SHAFT

Pilot shafts are tools that are inserted into the grinder arbors and used during the grinding process of housings of different sizes. Housing shafts are used to correct the upper angles of the cylinder head housings by inserting into the morse hive or by manual use or to prepare for the process of engaging in bag.



VARIOUS ABRASIVES

They are various abrasives used in the engine renewal and cylinder head repair industry.



RUBBER DISMANTLING APPARATUS

It is an alternative apparatus that is used during the dismantling of various sizes of oil rubbers on the valve guides without deterioration.

HOUSING GRINDER MOTOR

It is a high-speed electric motor used during the grinding of cylinder head housings. It consists of two models, fixed head or moving head.

HONING HEADS

They are various honing apparatuses that provide easy use in all diameter and surface conditions. It consists of three parts: manual pass, automatic and mobile.

REAMERS

Helical grooved hand reamers have an important place in the automotive industry with all kinds of intermediate sizes increasing from Q4.00 mm to Q26.00 mm. Reamers made of Hss material can also be manufactured as diamond.

HOUSING CONTROL APPARATUS

The apparatus can be moved manually to the desired location and works only with electrical connection, not air.



HEAD REVISION MACHINE DIAMONDS CARRIER and SHAFTS

Pilot shafts diamond carriers and diamonds of all types of head revision machines.

SURFACE GRINDING APPARATUS

They are the apparatus used during surface grinding of cylinder heads with uneven lower parts.

ALL KINDS OF INDUSTRY-RELATED MEASURING TOOLS AND MATERIALS

SOME TYPES OF AUTOMOTIVE SPARE PARTS

CHEMICAL DETERGENT AND GRINDING FLUIDS

WATER IMMERSION SYSTEM HEAD TEST MACHINE





INNOVATION MACHINE
AUTO. SINGING. and TIC. LTD. STI.



Fevzi Çakmak Neighborhood 10505 Street
Number:29 **Karatay/KONYA/TURKEY**